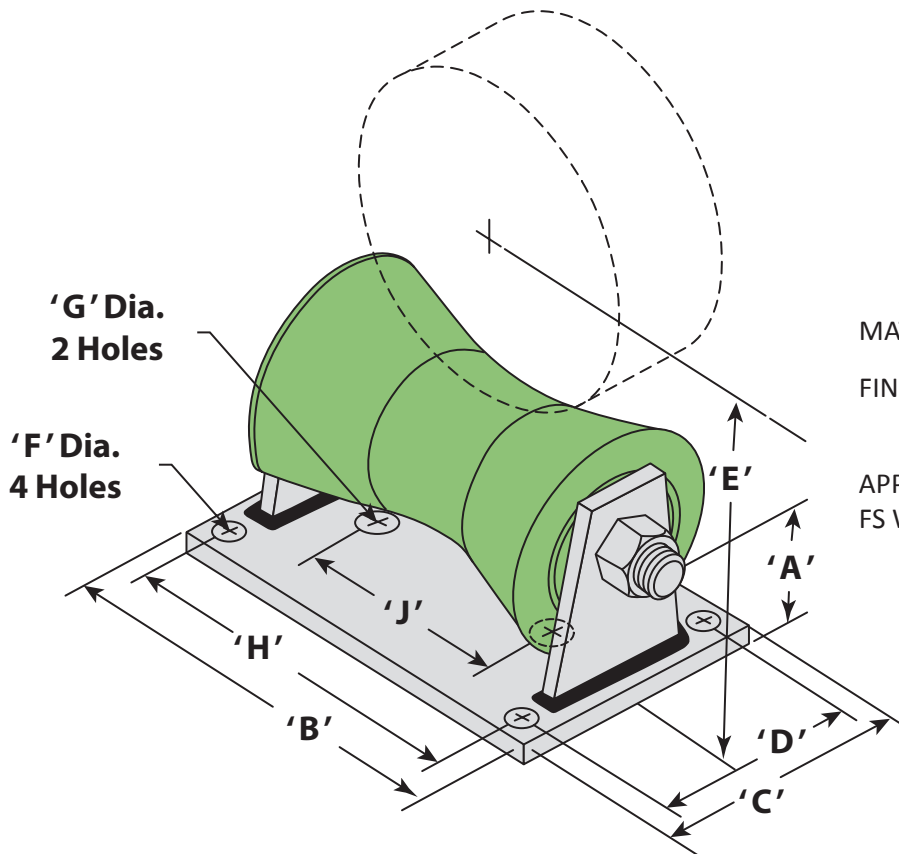


# PIPE ROLLER STAND

8B



MATERIAL: CARBON OR STAINLESS STEEL

FINISH: BLACK, HOT DIPPED GALVANIZED  
BLUECOAT, 304SS, 316SS

APPROVALS: MSS SP-58 & SP-69 TYPE 44  
FS WW-H-171E TYPE 45

INCLUDES: 1 – STEEL BASE & 1 – ROLL AXLE  
(OMIT CAST IRON ROLL WHEN ORDERING NON-CONDUCTIVE ROLLER)

PIPE SIZE	A	B	C	D	E	DIA. F	DIA. G	H	J	AXLE DIA.	MAX LOAD	WEIGHT LBS./EA.
2	1 3/4	8 3/8	6	4	3 11/16	9/16	1	3 3/8	6 3/8	1/2	390	5.08
2 1/2	1 3/4	8 3/8	6	4	3 15/16	9/16	1	3 3/8	6 3/8	1/2	390	5.08
3	1 3/4	8 3/8	6	4	4 1/4	9/16	1	3 3/8	6 3/8	1/2	390	5.08
3 3/4	1 3/4	8 3/8	6	4	4 1/2	9/16	1	3 3/8	6 3/8	1/2	390	5.08
4	2	9 7/8	6	4 1/4	5	9/16	1	4 3/4	7 7/8	1/2	950	6.31
5	2	9 7/8	6	4 1/4	5 9/16	9/16	1	4 3/4	7 7/8	1/2	950	6.31
6	2	9 7/8	6	4 1/4	6 1/16	9/16	1	4 3/4	7 7/8	1/2	950	6.31
8	3 3/8	8 5/8	8	5	8 13/16	11/16	1	7	4	3/4	2100	13.65
10	3 3/8	8 5/8	8	5	9 7/8	11/16	1	7	4	3/4	2100	13.65
12	3 7/8	11	8	6	11 7/16	13/16	1	9	5 3/4	7/8	3075	21.00
14	3 7/8	11	8	6	12 1/16	13/16	1	9	5 3/4	7/8	3075	21.00
16	4 1/2	12 3/8	10	6 1/2	13 5/8	13/16	1	10 3/8	6 3/4	1 1/8	4980	34.23
18	4 1/2	12 3/8	10	6 1/2	14 11/16	13/16	1	10 3/8	6 3/4	1 1/8	4980	34.23
20	4 1/2	12 3/8	10	6 1/2	15 11/16	13/16	1	10 3/8	6 3/4	1 1/8	4980	34.23
24	4 3/8	13 1/2	10	6 1/2	17 11/16	13/16	1	11 1/2	7 1/2	1 1/4	6100	40
30	5 1/8	17	10	7 3/4	21 3/4	1 1/16	1	14 1/4	10	1 3/4	7500	71.32
36	5 3/4	20	12	9	25 5/16	1 3/16	1	17	12	2	12,000	103.86
42	5 3/4	20	12	9	28 5/16	1 3/16	1	17	12	2	12,000	103.86

ALL DIMENSION IN INCHES

DIMENSIONS & WEIGHTS CAN VARY SLIGHTLY