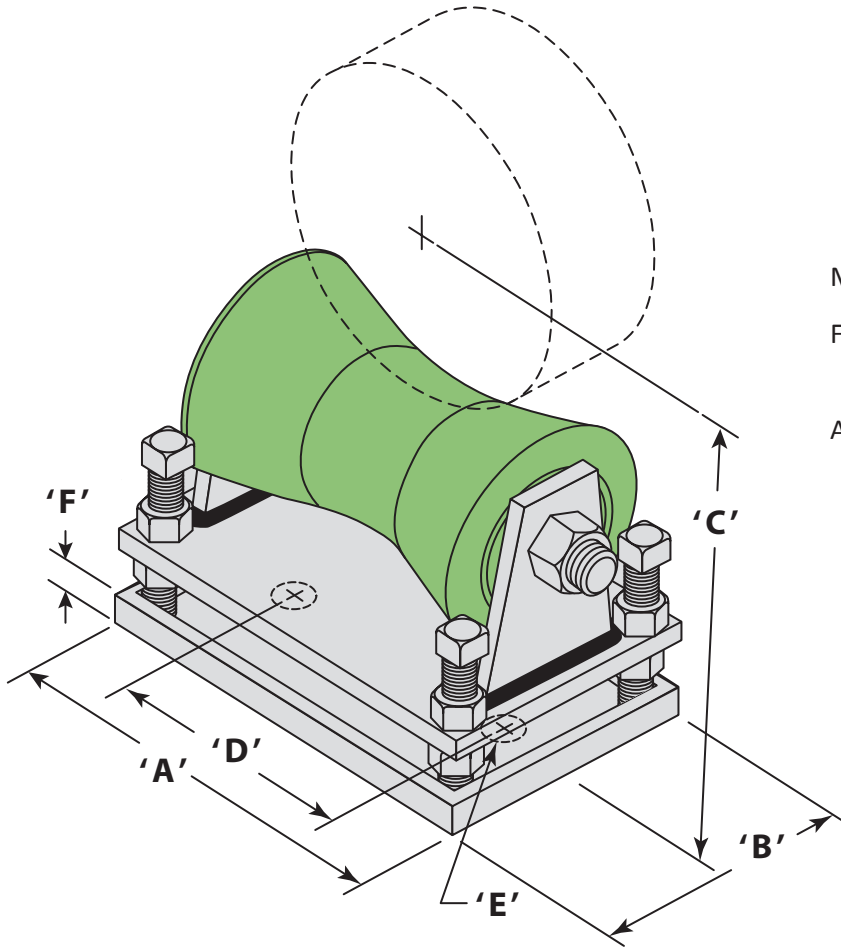


# ADJUSTABLE PIPE ROLLER STAND

9B



MATERIAL: CARBON STEEL, STAINLESS STEEL

FINISH: BLACK, HOT DIPPED GALVANIZED  
BLUECOAT, 304SS, 316SS

APPROVAL: MSS SP-58& SP-69 TYPE 46

FS WW-H-171E TYPE 47

INCLUDES: 1 –STEEL BASE, 1 – STEEL PLATE, 1 – ROLL AXLE, 4 – ADJUSTING BOLTS & LOCKING NUTS

(OMIT CAST IRON ROLL WHEN ORDERING NON-CONDUCTIVE ROLLERS)

PIPE SIZE	A	B	C MIN.	C MAX.	D	E	F	AXLE DIA.	MAX LOAD/LBS	WEIGHT LBS/EA.
2	6 7/8	6 1/2	4 3/4	5 5/8	3 7/8	1	1	1/2	390	11
2 1/2	6 7/8	6 1/2	5	5 7/8	3 7/8	1	1	1/2	390	11
3	6 7/8	6 1/2	5 5/16	6 9/16	3 7/8	1	1	1/2	390	11
3 1/2	6 7/8	6 1/2	5 9/16	6 7/16	3 7/8	1	1	1/2	390	11
4	8 1/2	6	6 3/16	7 7/16	5 1/8	1	1	1/2	950	13.1
5	8 1/2	6	6 3/4	8	5 1/8	1	1	1/2	950	13.1
6	8 1/2	6	7 1/4	8 1/2	5 1/8	1	1	1/2	950	13.1
8	10 1/2	7 1/2	10 1/8	11 11/16	7 3/8	1	1	3/4	2100	29
10	10 1/2	7 1/2	11 3/16	12 3/4	7 3/8	1	1	3/4	2100	29
12	12 1/2	8 1/4	12 3/4	14 1/8	9 1/2	1	1	7/8	3075	40
14	12 1/2	8 1/4	13 3/8	14 3/8	9 1/2	1	1	7/8	3075	40
16	14 5/8	11	15 3/8	17 1/4	11 1/8	1	1	1 1/8	4980	63.84
18	14 5/8	11	16 3/8	18 1/4	11 1/8	1	1	1 1/8	4980	63.84
20	14 5/8	11	17 3/8	19 1/4	11 1/8	1	1	1 1/8	4980	63.84
24	15 3/4	11	19 1/4	21 1/4	12 1/4	1	1	1 1/4	6100	71
30	19 1/2	10 3/4	24 7/16	26 11/16	15 3/4	1	1 1/2	1 3/4	7500	125.28
36	22 1/2	12	28 3/8	31 3/4	16	1	1 1/2	2	12,000	233
42	22 1/2	12	31 1/2	34 7/8	16	1	1 1/2	2	12,000	233

DIMENSIONS IN INCHES

DIMENSIONS & WEIGHTS CAN VARY SLIGHTLY