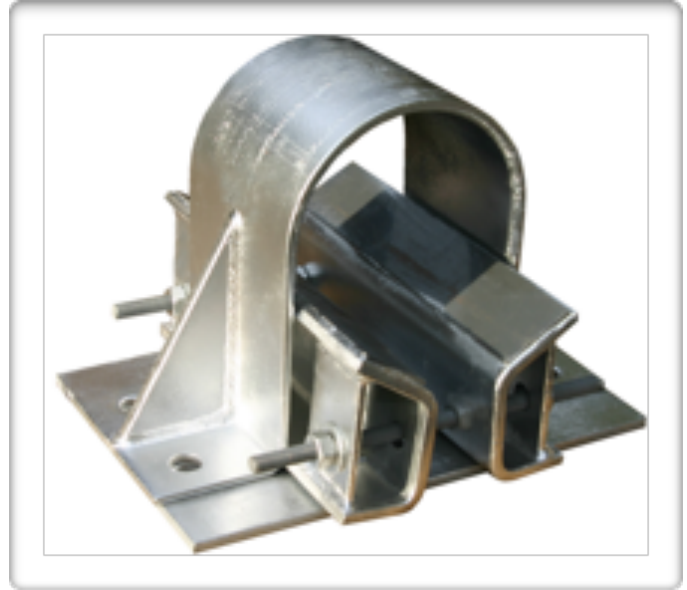


ATLAS CLAMPS

Atlas Wedge Clamps are used to provide a safe and reliable means to anchor and level piping systems. The wedge assembly provides easy height and level adjustment while the clamp secures the host pipe to the foundation. Atlas Wedge Clamps isolate the pipe from the clamp using fiberglass reinforced plastic (FRP) pads which prevents any metal to metal contact. Inspection of the pipeline is easily accomplished by simply lowering the wedge assembly.

The Atlas Clamp can be directly mounted to a variety of foundations including skids and concrete using the appropriate hardware. The optional base plate assists in securing the wedge block assembly to the foundation. Note: Anchor bolts are not provided.

Manufactured to the highest quality standards, Atlas clamps will save both time and labor which will result in increased profitability on your next project.



Pictured above is the Atlas Wedge Clamp with Base Plate

FEATURES

- AVAILABLE IN SIZES 2" TO 48"
- 1.5" HEIGHT ADJUSTMENT
- NO METAL TO METAL CONTACT
- EASY INSPECTION OF PIPELINE
- COMMONLY USED ON:
 - ✦ SKID MOUNTED M&R STATIONS
 - ✦ PIG LAUNCHERS/RECEIVERS
 - ✦ COMPRESSOR STATIONS
 - ✦ ABOVE GROUND LINES

OPTIONS

- COATINGS:
 - ✦ PAINTED
 - ✦ GALVANIZED
- BASE PLATE:
 - ✦ NO PLATE
 - ✦ PLATE WITH NO HOLES
 - ✦ PLATE WITH 4 HOLES
- INSULATING MATERIALS:
 - ✦ FRP
 - ✦ OTHERS UPON REQUEST

ATLAS CLAMPS

MATERIALS OF CONSTRUCTION

CLAMP: ASTM A-36 CARBON STEEL

SHIM BLOCK: ASTM A-36 CARBON STEEL

BASE PLATE: ASTM A-36 CARBON STEEL

INSULATORS: FIBERGLASS REINFORCED
PLASTIC (FRP)

THREADED ROD: ASTM A-108, ZINC PLATED



REPRESENTED BY:

Liberty Sales and Distribution, LLC

2880 Bergey Road, Suite F

Hatfield, PA 19440

Phone: (877) 373-0118

Fax: (888) 850-3787

Email: SALES@LIBERTYSALES.NET

