

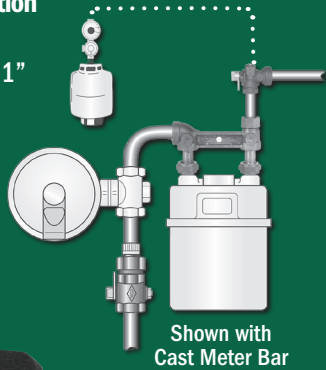
Meter Outlet / Bypass Valves

Can be assembled directly to the meter outlet, or used with a meter bar that provides a solid anchor to the meter set. This valve can be produced with or without a by-pass feature. These valves are designed for use with natural, manufactured or LP gas only.

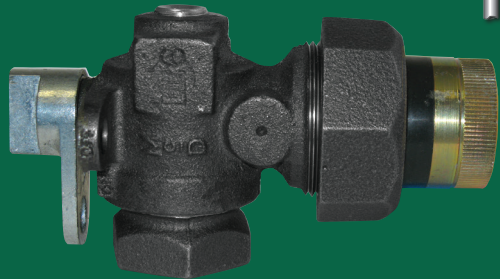
837B & 837G

5 PSIG | Tamperproof | Lockwing
Union | By-Pass Option

- 3/4" or 1" FNPT inlet x 3/4" or 1" insulated union outlet
- 5 PSIG rated valve
- 3/8" by-pass port size
- Black or zinc coated
- Brass Ball with 3/4" port



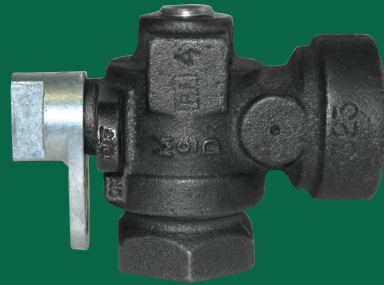
Shown with Cast Meter Bar



835B & 835G

5 PSIG | Tamperproof | Lockwing
By-Pass Option

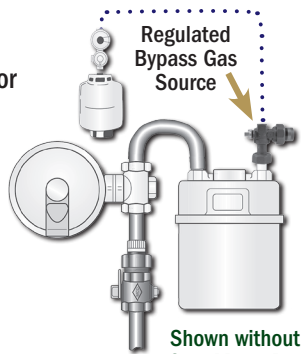
- 3/4" or 1" FNPT x FNPT inlet x outlet
- 5 PSIG rated valve
- 3/8" by-pass port size
- Black or zinc coated
- Brass Ball with 3/4" port



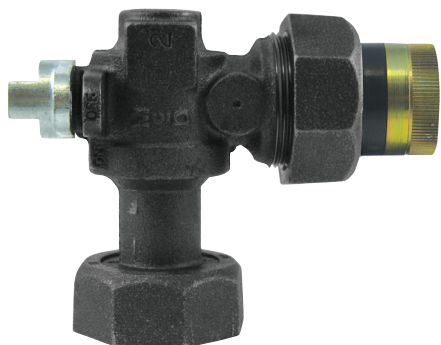
857B & 857G

5 PSIG | Tamperproof | Lockwing
Union | By-Pass Option

- 10LT, 20LT, 30LT, 1A, & OEMO Integral Meter Swivel Inlet x 3/4" or 1" Insulated Union outlet
- 5 PSIG rated valve
- 3/8" by-pass port size
- Black or zinc coated
- Brass Ball with 3/4" port



Shown without Cast Meter Bar



855B & 855G

5 PSIG | Tamperproof | Lockwing
By-Pass Option

- 10LT, 20LT, 30LT, 1A, & OEMO Integral Meter Swivel Inlet x 3/4" or 1" FNPT outlet
- 5 PSIG rated valve
- 3/8" by-pass port size
- Black or zinc coated
- Brass Ball with 3/4" port

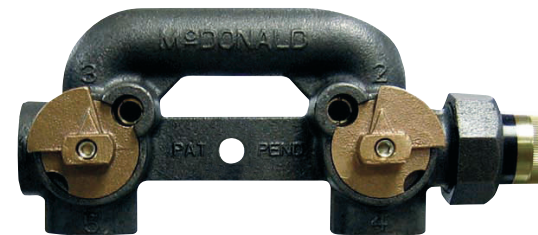


Residential Meter Application

6410 Series

High Security Lock Design | Horizontal Inlet & Outlet
By-Pass Meter Bar - Two Integral Valves | No Swivels Attached

- Cast iron & brass construction
- 3/4" or 1" connections
- 6" Centerline
- 5 PSIG rated valves
- For up to class 425 meters
- FNPT side inlet x side insulated union outlet
- **With Relube Valve** - The valves in this A.Y. McDonald bar may be re-lubricated in the full open or full closed position when the valve is pressurized or un-pressurized.
- **Note:** These bars are intended for use with natural, manufactured and L.P. gas only.



Industrial Bypass Meter Bar

6480 Series

- Cast iron & brass construction
- 8.25" Centerline
- Maximum Flow in Bypass Mode
- 1 1/4" or 1 1/2" End Connections (With Insulated Union Outlet)
- 25 PSIG rated
- For class 425 to 1000 meters
- **Note:** These bars are intended for use with natural, manufactured and L.P. gas only.

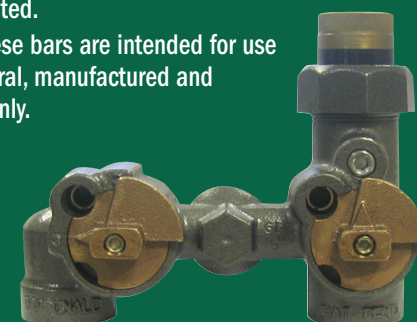


Multiple Meter Application

6312 Series

High Security Lock Design | No Swivels Attached
Rear Center Inlet & Vertical Outlet
By-Pass Meter Bar - Two Integral Valves

- Cast iron & brass construction
- 3/4" or 1" connections
- 6" Centerline
- FNPT rear center inlet x vertical insulated union outlet
- For up to class 425 meters
- Black or zinc coated
- **With Relube Valve** - The valves in this A.Y. McDonald bar may be re-lubricated in the full open or full closed position when the valve is pressurized or un-pressurized.
- 5 PSIG rated.
- **Note:** These bars are intended for use with natural, manufactured and L.P. gas only.



High-Security Locking Design for Both Valves



Standard Barrel Locks and Key

We know the meter is your cash register. That's why we have designed a high-security lock to protect your revenue.

What our Customers are saying

Paul Gugliotta - National Grid

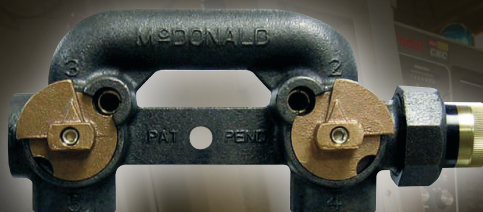
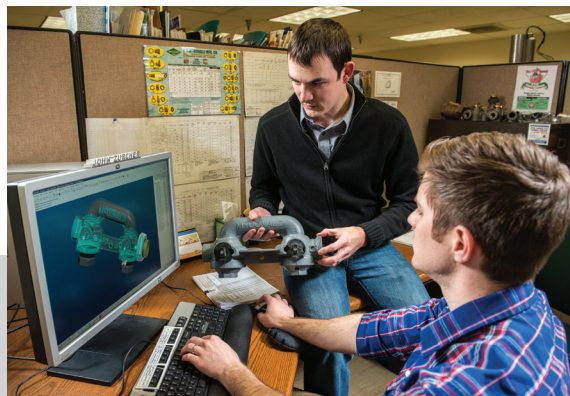
“The bypass meter bar eliminates a half-hour’s worth of work and sometimes more,” said Paul Gugliotta, senior codes and standards engineer for National Grid, the third-largest gas utility in the country in terms of customers and largest in revenue, which serves areas of New York City, Rhode Island, Massachusetts and New Hampshire.”

“Just cycle the meter bar to the bypass mode, change the meter, and you’re on your way.”

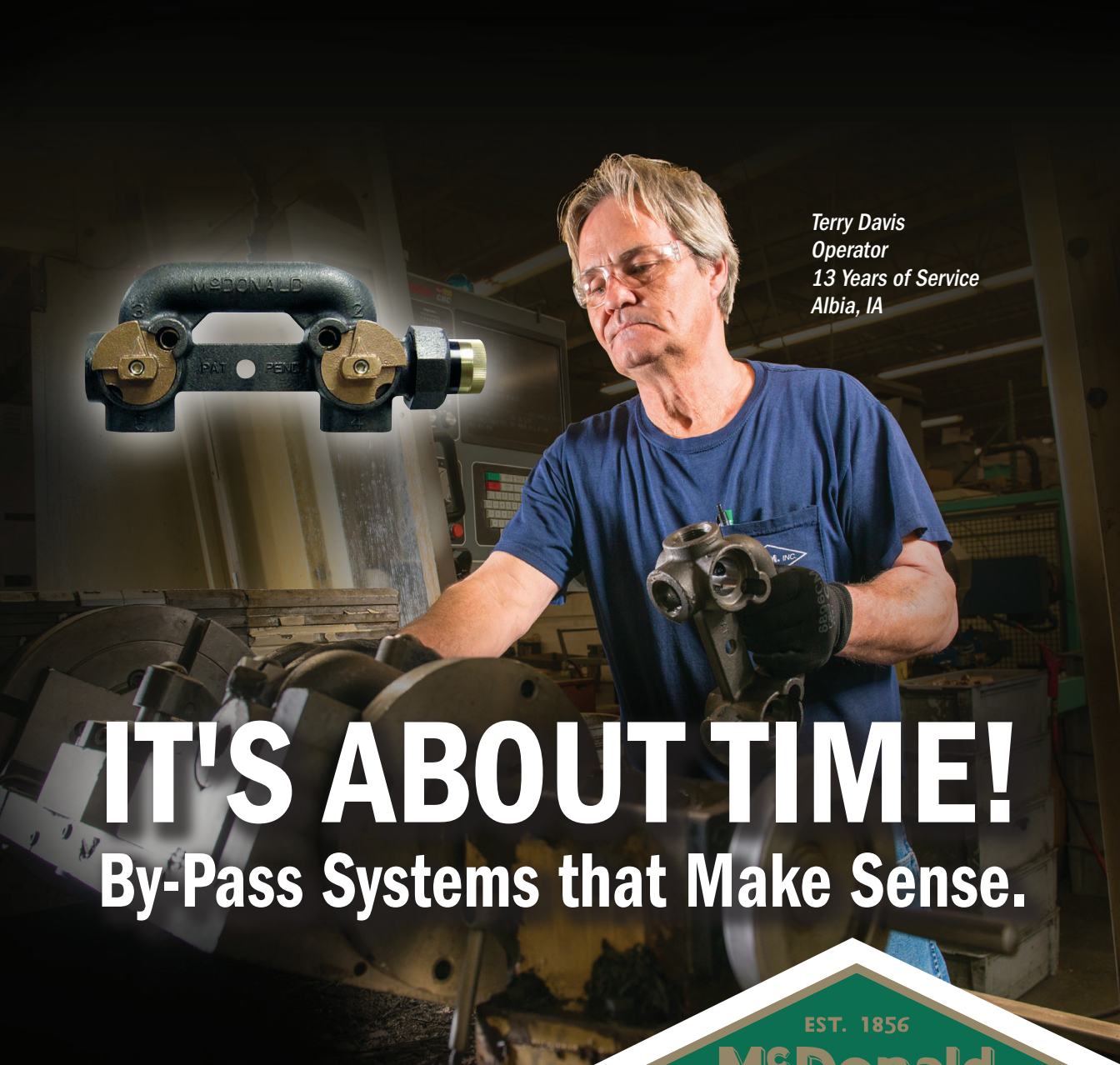
“A.Y. McDonald was integral in coming out and training our staff members on it and they continue to do so, providing additional training as we go along,” he said. “Even though we’ve had the product for six years now, they are still providing training whenever needed. Their service has been outstanding.”

Bradley Wong - NSTAR Electric and Gas

“All along this whole process, A.Y. McDonald and the people in the office have worked with us,” said Bradley Wong, Supervisor of Gas Services for NSTAR Electric and Gas, which serves 300,000 gas customers in Massachusetts. “The manufacturer’s rep has been fantastic—training us and, literally, every service tech that would be using the meter bar.”



*Terry Davis
Operator
13 Years of Service
Albia, IA*



IT'S ABOUT TIME! By-Pass Systems that Make Sense.

IT'S ABOUT TIME! By-Pass Systems that Make Sense.

Full Flow Even in By-Pass Mode

- No interruption in service or reduction in flow capacity.
- No loss of pilot lights.
- Scheduling, re-lights, and associated cost are a thing of the past.
- Meter change-outs can be performed anytime, 12 months a year.

Safe - Fast - Secure

- No need for additional hoses, regulators, bottles, or any special tools.
- Your gas supply is always ready & regulated to the correct pressure.
- A few turns of the valves and your by-pass is complete.
- Industry proven locking design for theft protection.
- Performance testing proven at **gti**.

It is about time, and time is money. If you want a real return on your investment, call us today for more information.

Growth of By-Pass Technology Demand

Over the past two years, demand for by-pass technology has doubled in comparison to the previous six years.

