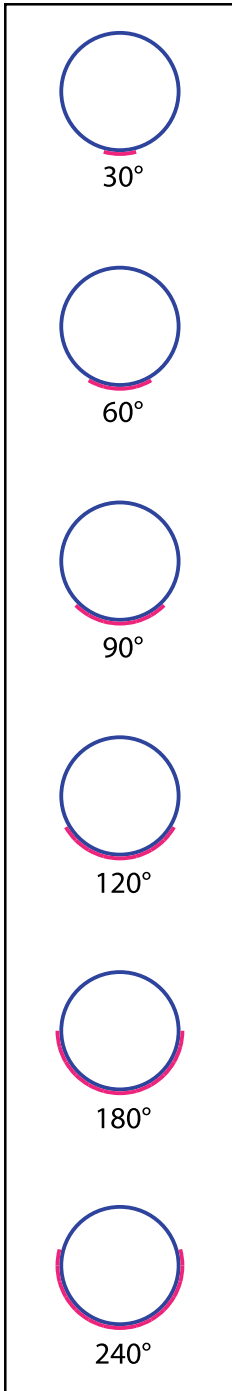


GLAS MESH FRP WARE PADS, SADDLES & SHIELDS

AVAILABLE STANDARD CIRCUMFERENCE IN DEGREES (TYPE#)



Pipe Size	Type #30 30°	Type #60 60°	Type #90 90°	Type #120 120°	Type #180 180°	Type #240 240°
3/4"			✓	✓	✓	✓
1"			✓	✓	✓	✓
1 1/4"			✓	✓	✓	✓
1 1/2"		✓	✓	✓	✓	✓
2"		✓	✓	✓	✓	✓
3"		✓	✓	✓	✓	✓
4"		✓	✓	✓	✓	✓
6"		✓	✓	✓	✓	✓
8"	✓	✓	✓	✓	✓	✓
10"	✓	✓	✓	✓	✓	✓
12"	✓	✓	✓	✓	✓	✓
14"	✓	✓	✓	✓	✓	✓
16"	✓	✓	✓	✓	✓	✓
18"	✓	✓	✓	✓	✓	✓
20"	✓	✓	✓	✓	✓	✓
24"	✓	✓	✓	✓	✓	✓
30"	✓	✓	✓	✓	✓	✓
36"	✓	✓	✓	✓	✓	✓
42"	✓	✓	✓	✓	✓	✓
48"	✓	✓	✓	✓	✓	✓

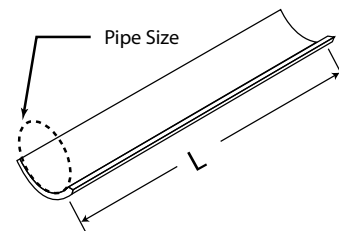
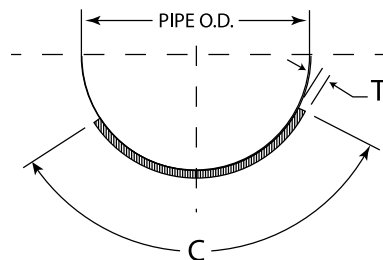
SPECIAL DIAMETERS AVAILABLE ON QUOTE BASIS

STANDARD LENGTHS

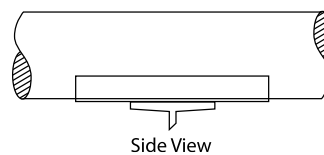
Diameter	TYPE #30	TYPE #60	TYPE #90	TYPE #120	TYPE #180	TYPE #240
3/4"-4"	---	---	12"	12"	6"	6"
6"	---	12"	12"	12"	9"	9"
8"-45"	12"	12"	12"	12"	12"	12"

CUSTOM LENGTHS AVAILABLE IN ANY QUANTITY

WAREPADS2



C = Circumference
L = Length
T = Thickness



FRP / STEEL PIPE BONDING EPOXIES

Product	Installation Conditions	Surface Preparation	Sizes
Seam Sealer Epoxy	Ambient Temperatures	Grit Blast, Epoxy Primed	1lb & 2lb Kits 1:1
Liquid Seam Sealer	Low Temp 40° F (4°C)	Grit Blast, Wire Brush	Pint & Quart Kits
S5H13 Epoxy	High Temp 325°F (163°C)	Grit Blast, Wire Brush	Pint Kits
2216 Epoxy	Ambient Temperatures	Clean Painted Surface	Pint & Quart, & 6oz Kits
Six10 Epoxy	Ambient Temperatures	Grit Blast, Wire Brush	10 oz Tube w/nozzle
460 Epoxy	Ambient Temperatures	Grit Blast, Wire Brush	38 & 200 ml Cartridge
DP-1080 Acrylic	Ambient Temperatures	Low Energy Substrates	38 & 265 ml Cartridge

THE BETTER THE SURFACE PREPARATION THE BETTER THE BOND (INSTRUCTION SHEETS AVAILABLE SEPARATELY)

STOCKED STANDARD THICKNESS

STOCKED THICKNESSES

Pipe Size	Standard Material Gel Coat Red	Hi-Temp Material Gel Coat Blue	Thick Wall Gel Coat Cream	Thin Wall Gel Coat Green	Other Available Thicknesses Gel Coat Black
3/4"	1/8"	1/8"			1/4"
1"	1/8"	1/8"			1/4"
1 ¼"	1/8"	1/8"			1/4"
1 ½"	1/8"	1/8"			1/4"
2"	1/8"	1/8"	1/4"		3/8", 1/2"
3"	1/8"	1/8"	1/4"		3/8", 1/2"
4"	1/8"	1/8"	1/4"		3/8", 1/2"
6"	1/8"	1/8"	1/4"		3/8", 1/2"
8"	1/8"	1/8"	1/4"		3/8", 1/2"
10"	3/16"	3/16"	1/4"	1/8"	3/8", 1/2"
12"	3/16"	3/16"	1/4"	1/8"	3/8", 1/2"
14"	1/4"	1/4"		1/8"	3/8", 1/2"
16"	1/4"	1/4"		1/8"	3/8", 1/2"
18"	1/4"	1/4"		1/8"	3/8", 1/2"
20"	1/4"	1/4"		1/8"	3/8", 1/2"
24"	1/4"	1/4"		1/8"	3/8", 1/2"
30"	1/4"	1/4"		1/8"	3/8", 1/2"
36"	1/4"	1/4"		1/8"	3/8", 1/2"
42"	1/4"	1/4"		1/8"	3/8", 1/2"
48"	1/4"	1/4"		1/8"	3/8", 1/2"

STANDARD AND SPECIAL THICKNESSES ARE GEL COATED RED, BLUE, CREAM, GREEN & BLACK WAREPADS3

SPECIAL DIAMETERS & THICKNESSES AVAILABLE UPON REQUEST

Glas Mesh FRP materials are a hand lay-up fiberglass reinforced polyester, isophthalic, or vinyl ester resin with integral liner and a highly pigmented exterior gel coating. Reinforcements include 1 1/2" oz. mat and 24 oz. woven roving with no added fillers. The composites are UV resistant, durable and tolerate a wide range of temperatures, -60°F to +400°F (-51°C to +205°C).

FIBERGLASS REINFORCED POLYESTER, ISOPHTHALIC & VINYL ESTER RESINS

TYPICAL PROPERTIES

PHYSICAL

Property	Units	Value	ASTM Test
Specific Gravity	lb/cu/in	.005	D792
Density	lb/cu/in	.055	D792
Thermal Conductivity	BTU/hr/ft ² in/°F	1.5	D177
Coefficient of Thermal Expansion	10 ⁻⁵ in/in/°F	15-19 x 10 ⁻⁴	D696
Water Absorption	% + wt. 24/168 hr.	.11/.25	D570

MECHANICAL

Property	Units	Value	ASTM Test
Ultimate Tensile	psi	12,000	D638
Compressive Strength	psi	24,000	D695
Flexural Modulus	psi	800,000 — 900,000	D790
Flexural Strength	psi	19,000 — 20,000	D790

ELECTRICAL

Property	Units	Value	ASTM Test
Dielectric Strength (perpendicular to lamination)	VMP in Oil	350	D149
Volumetric Resistivity	Ohms/cm	10 ¹³ –10 ¹⁵	D257

THERMAL

Resin	Maximum Continuous Operating Temperature
Polyester & Isophthalic	180° F (83° C)
Vinyl Ester	325° F (163° C)

RESIN PROPERTIES

VALUES CAN VARY DEPENDING ON TYPE OF REINFORCEMENTS, ADDITIVES, ETC.

STOCKED BONDING & SEALING EPOXIES

Epoxy Seal Sealer
1 lb. & 2 lb. Kits



Liquid Seam Sealer
Pt. & Qt. Kits



S5H13 HiTemp
Pt. Kits



2216 Epoxy
Pt. & Qt. Kits
*6oz. cartridge



Six10 Epoxy
10oz. tube w/mixing nozzle
Uses standard caulking gun

