

TYPICAL AERIAL CROSSINGS & PROCESS PIPE APPLICATIONS



INSULATING PIPE ROLLERS

Non-Conductive Pipe Rollers (NCR) and Non-Metallic Pipe Rollers (NMR) are manufactured as a direct replacement for cast iron rolls when metal to metal pipe to roller contact needs to be eliminated.

Non-Conductive Rollers are custom compounded from polyether type polyurethane resins.

Non-Metallic Rollers are machined from a copolymer.

Advantages:

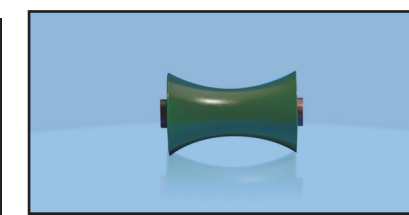
- Electrically isolates carrier pipe from the hanger or support
- Corrosion resistant, will not bind around the axle
- Non-Sparking, Non-abrasive, low friction coefficient
- Eliminate chafing & rusting caused by cast iron rolls
- Excellent for exposed installations, weather resistant
- Eliminate chafing & rusting caused by cast iron rolls
- Direct replacement for cast iron rollers

✓ **Available Stocked Sizes**

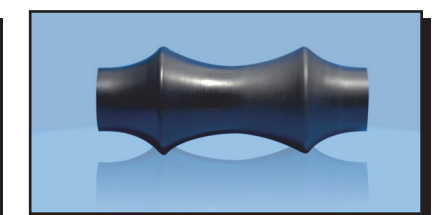
Size	H Model NCR Long Pattern	S Model NCR Short Pattern	Size	H Model NMR Long Pattern	S Model NMR Short Pattern
2"	✓2H	✓2S	2"	✓2HNM	Quote 2SNM
3"	✓3H	✓3S	3"	✓3HNM	Quote 3SNM
4"	✓4H	✓4S	4"	✓4HNM	Quote 4SNM
5"	✓5H	Quote 5S	5"	Quote 5HNM	Quote 5SNM
6"	✓6H	✓6S	6"	✓6HNM	Quote 6SNM
8"	✓8H	✓8S	8"	✓8HNM	Quote 8SNM
10"	✓10H	✓10S	10"	✓10HNM	Quote 10SNM
12"	✓12H	✓12S	12"	✓12HNM	Quote 12SNM
14"	✓14H	Quote 14S			
16"	✓16H	✓16S			
18"	✓18H	Quote 18S			
20"	✓20H	✓20S			
24"	✓24H	✓24S			
30"	✓30H	Quote 30S			



NCR-LONG PATTERN (H)

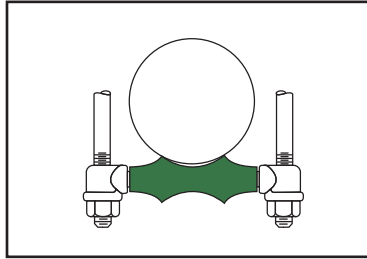


NCR-SHORT PATTERN (S)

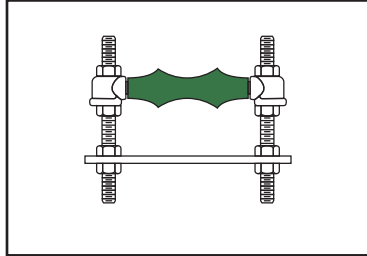


NMR - LONG PATTERN (HNM)

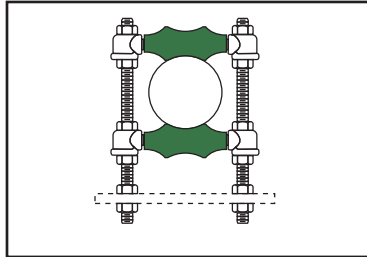
Common Supports



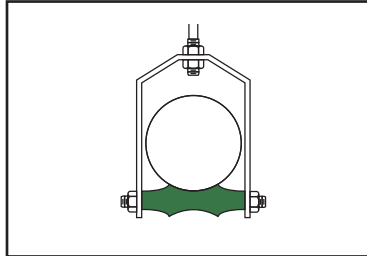
Single Pipe Roll



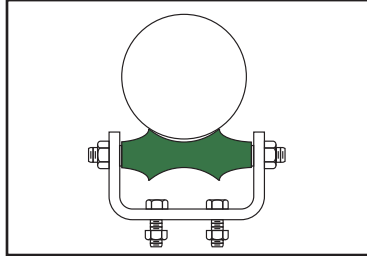
Adj. Roll Support



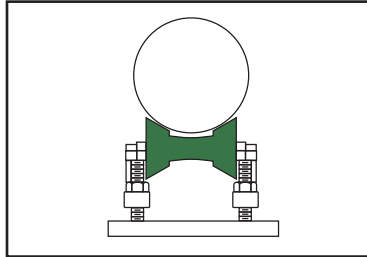
Adj. Roll Guide



Adj. Roll Hanger



Roller Chair



Adj. Roll Stand

TYPICAL POLYETHER TYPE POLYUTETHANE PROPERTIES (NCR)

Mechanical	Units	Method	Data
Hardness	Shore A		98
Tensile Modulus	psi @ 100%	ASTM D638	2542
Tensile Strength	psi	ASTM D638	6764
Tensile Elongation	%	ASTM D638	247
Die C Tear	pli	ASTM D470	477
Split Tear	pli	ASTM D470	130
Compression Set Method B	%	ASTM D395	21
Bayshore Resilience	%	ASTM D2632	39
Compressive Modulus	psi @ 5 %	ASTM D695	500
	psi @ 10 %		850
	psi @ 15 %		1175
	psi @ 20 %		1600
	psi @ 25 %		2125
Max Temperature	°F (°C)		190°F (88°C)
ELECTRICAL			
Breakdown Voltage	Volts/mil	ASTM 6	40.6 volts
Dielectric Strength	Volts/mil	ASTM D149	331v/t/in
Dielectric Constant @1000hz (AC)	AC	ASTM D150	4.88
Volume Resistivity	Ohms/cm	ASTM D257	2.0 x 10 ¹⁴

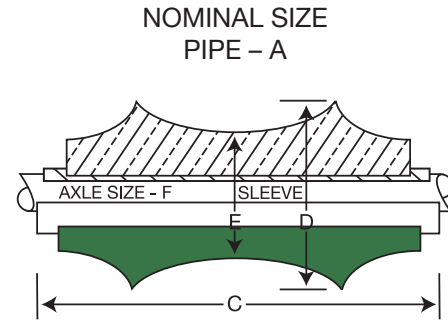
TYPICAL POLYAMIDE COPOLYMER PROPERTIES (NMR)

Mechanical	Units	Method	Data
Rockwell Hardness	R	ASTM D785	115-125
Tensile Modulus	psi	ASTM D638	550,000
Tensile Strength	psi	ASTM D638	13700
Compressive Strength	psi	ASTM D695	19000
ELECTRICAL			
Dielectric Strength	Volts/mil	ASTM D149	500-60°
Dielectric Constant	60 cps	ASTM D150	3.7
THERMAL			
Safe Short Periods	°F (°C)		365°F (185°C)
Safe Temp Range Permanent	°F		-40°F --+ 248°F
	°C		-40°C --+ 120°C

Typical properties are not to be construed as specifications.

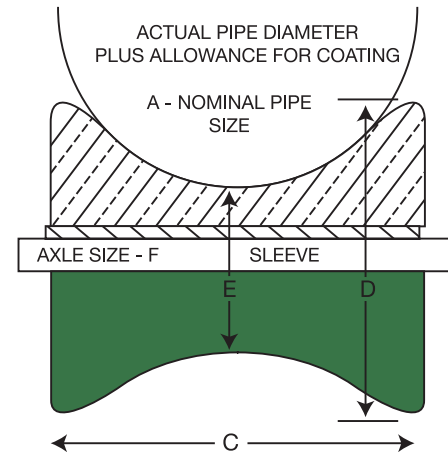
NON-CONDUCTIVE PIPE ROLLER DIMENSIONS HANGER MOUNTED MODEL

ACTUAL PIPE DIAMETER PLUS ALLOWANCE FOR COATING



Model Number	Nominal Pipe Size - A	C	D	E	F
2H	2	2 5/8	1 1/4	13/16	3/8
3H	3	3 3/4	1 5/8	7/8	1/2
4H	4	4 3/4	2	1 1/2	1/2
5H	5	5 13/16	2 3/8	1 1/2	5/8
6H	6	6 7/8	2 3/4	1 3/4	3/4
8H	8	8 7/8	3 1/8	2 1/8	7/8
10H	10	11	3 5/8	2 1/8	7/8
12H	12	12 1/2	4	2 1/8	1
14H	14	14 1/2	4 1/2	2 1/2	1 1/8
16H	16	16 1/4	5	2 5/8	1 1/4
18H	18	18 3/8	5 9/16	2 3/4	1 1/4
20H	20	20 1/4	5 3/4	3 1/2	1 1/4
24H	24	24 1/4	7 1/16	4 1/8	1 1/2
LARGER SIZES ON SPECIAL ORDER					

NON-CONDUCTIVE PIPE ROLLER DIMENSIONS STAND MOUNTED MODEL



Model Number	Nominal Pipe Size - A	C	D	E	F
2 S	2	2 5/8	2	13/16	1/2
3 S	3	2 5/8	2 1/8	1 1/8	1/2
4 S	4	3 3/4	2 9/16	1 1/8	1/2
5 S	5	3 3/4	2 3/8	1 1/8	1/2
6 S	6	3 3/4	2	1 1/8	1/2
8 S	8	6	3 3/8	1 3/8	3/4
10 S	10	6	3 1/8	1 5/8	3/4
12 S	12	8	3 7/8	2 3/4	7/8
14 S	*14	9 1/8	4	2 3/4	7/8
16 S	16	9	3 7/8	1 3/4	1 1/8
18 S	*18	9	4	1 15/16	1 1/8
20 S	20	9	4	1 7/8	1 1/8
24 S	24	10	4 7/16	2 1/4	1 1/4