

PosiTest[®] *Accurate & Dependable*

For the non-destructive measurement of non-magnetic coatings (paint, enamel, galvanizing, metalizing, plating, etc.) on STEEL



Easily measures
small parts of
almost any shape



Stable design with additional
tail-end support. No annoying
rocking during measurement.

Liberty Sales & Distribution, LLC

2880 Bergey Road, Suite F, Hatfield, PA 19440

Phone: (877) 373-0118 Fax: (888) 850-3787

Email: sales@libertysales.net Web: www.libertysales.net

PosiTest[®] *Accurate & Dependable*

For the non-destructive measurement of non-magnetic coatings (paint, enamel, galvanizing, metalizing, plating, etc.) on STEEL

ACCURATE

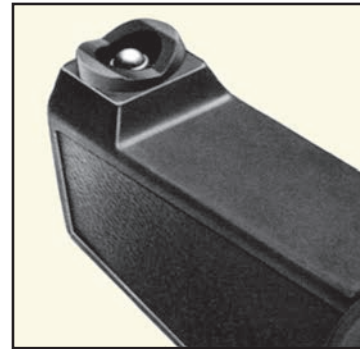
- Certificate of Calibration showing traceability to NIST included with every gage
- Matching Calibration Standards and Procedures available for every model
- Highly wear resistant Carbide Probe for longest life and continuous accuracy
- Removable center of dial cover for easy calibration adjustment
- Conforms to national and international standards

DURABLE

- Extra rugged housing, not affected by mechanical shock, water, acid or solvents
- Unique overall design, fully supported, positive positioning, no pivoting tendencies during measurement
- Can be used fully supported or with only the front probe area contacting the surface
- Functions on a permanent rare-earth cobalt magnet
- No batteries/electronics
- 2 year warranty

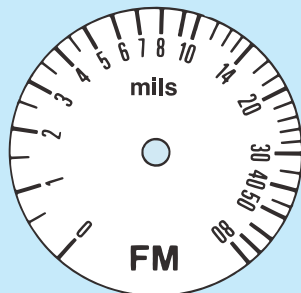
EASY TO USE

- Positive visual and audible indicators to designate when thickness reading is established
- "V" grooves in probe housing and Gage base allow correct positioning on cylindrical objects
- Compact, lightweight, precisely balanced, independent of gravity – can be used in any position
- GO/NO-GO button can be pre-set for rapid measurement
- Probe contact and dial rotation all in a one-finger operation
- Furnished with wrist strap and instructions in a high quality leather case with belt loops for your convenience



Carbide measuring probe for long life.

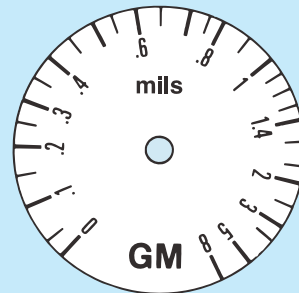
FOR: Hot dip galvanizing, hard chrome metalizing, paint, enamel coatings on steel



Scale FM 0–80 mils
Tolerance: ±0.2 mils up to 4 mils
±5% of the reading over 4 mils

Scale F 0–2000 microns
Tolerance: ±5 microns up to 100 microns
±5% of the reading over 100 microns

FOR: Electroplating, thin paint films, phosphating on steel



Scale GM 0–8 mils
Tolerance: ±0.04 mils up to 0.8 mils
±5% of the reading over 0.8 mils

Scale G 0–200 microns
Tolerance: ±1 micron up to 20 microns
±5% of the reading over 20 microns

