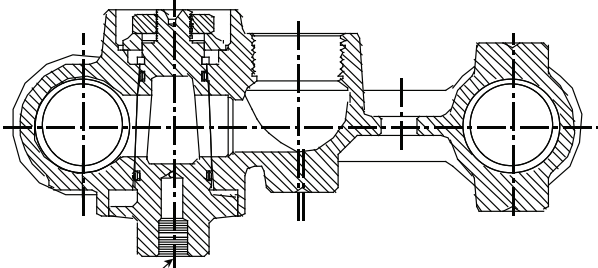


Relubrication Instructions

6722 Series Meter Bar



1/8" Relube Plug

NOTE: These valves are designed for use with natural, manufactured or LP gas only.

All A.Y. McDonald plug style gas valves are factory set.
DO NOT TAMPER WITH BOTTOM NUT.

1. A.Y. McDonald **6722 Series Meter Bars** may be re-lubricated in the full open or the full closed position when the valve is pressurized or unpressurized.
2. Remove the 1/8" NPT Allen Head pipe relube plug from the re-lubrication port in the head of the valve plug.
3. Fill the lube port with A.Y. McDonald approved lubricant and re-tighten the 1/8" pipe relube plug to move grease into the lubrication channels of the valve. Repeat as required to allow the valve to turn freely.

NOTE: Replacing the 1/8" relube plug with a standard 1/8" grease zerk will also allow easy re-lubrication of these valves. In either event, care should be taken to prevent over-lubrication.

4. After re-lubrication, the 1/8" Allen Head pipe relube plug should be securely replaced in the relube port in the head of the valve plug.

A small amount of gas leakage may be observed during this procedure, depending on the amount of lubrication already in the valve body.

NOTE: Commercially available relube tools can be used.
Check with A.Y. McDonald before using.

A.Y. McDONALD MFG.CO. • P.O. BOX 508 • DUBUQUE, IA 52004-0508
FAX 800-832-9296 • 800-292-2737